

*Terrus***M**

ULTRA LOW DRIFT | COLOURISED | MOBILE | ACCURATE

**THE BEST IN-CLASS
SLAM SYSTEM**



TerrusM

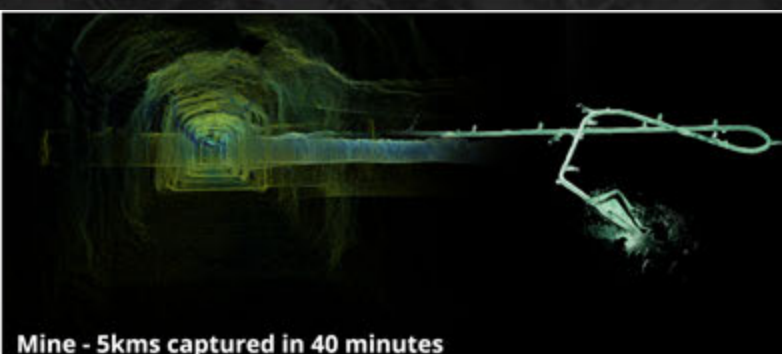
FAST AND ACCURATE UNDERGROUND MAPPING

Introducing the worlds most accurate mobile SLAM System the TerrusM by AutoMap. TerrusM is designed to suit the challenging demands of subterranean mapping in Australia's mining industry. Built with CSIRO's prize winning WildcatSLAM odometry engine, the TerrusM has been vigorously tested with Tier1 mining customers. Ruggedly designed to suit all situations, the TerrusM includes a tightly coupled, 360 degree 4k colour camera arrangement that makes it the ideal solution for a wide variety of scanning applications.

POWERED BY WILDCAT SLAM

1st prize for most accurate maps in
the DARPA Sub-T challenge 2021

Winner of the
Hilti SLAM challenge 2022



Mine - 5kms captured in 40 minutes



Designed for versatility

SENSOR SPECIFICATIONS

RANGE	100m
FILE TYPE	Las or PLY
IP RATING	Ip 65
OPERATION	Real-time
WEIGHT	2.4kg
CAMERAS	4k Colour Cameras
FIELD OF VIEW	360 Degrees
LIDAR	Rotating vlp-16
LOCAL RESOLUTION	10-20mm
POINTS/SECOND	300 000**
POWER	12-36 Vdc

TERMINAL SPECIFICATIONS

SIZE	11.6" FullHD 1080p
INTERFACE	Touch Screen
WIFI	802.11 abgn
SSD	2Tb
RAM	32Gb
GRAPHICS	512-Core Volta GPU
CPU	8-core ARM 64-bit
POWER	12-42Vdc



Accessories available for capturing any space



@Automap | Sales@Automap.io | 0438 753 678

