

Vellus^X

ULTRA LOW DRIFT | COLOURISED | MOBILE | ACCURATE

***THE BEST IN-CLASS
MOBILE MAPPING SYSTEM***





VellusX

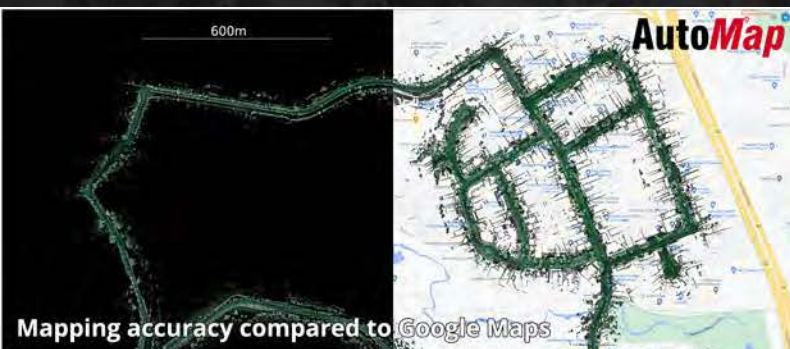


LARGE SCALE GLOBALLY ACCURATE SCANS IN MINUTES

Introducing the VellusX by AutoMap. VellusX is designed to capture city-scape and urban streetscapes that are otherwise very difficult to map. Avoid shutdowns and travel further in busy environments to capture HD map data in GPS-denied areas that are typically hard and time-consuming to capture. Built with the CSIRO's prize winning WildcatSLAM odometry engine, the VellusX has been vigorously tested in a wide variety of survey applications. Ruggedly designed to suit all situations, the VellusX includes a tightly coupled GPS solution to collect coloured map data in a global projection frame. This combination makes the VellusX the ideal solution for a wide variety of mobile survey scanning applications.

POWERED BY WILDCAT SLAM

Get incredible results from a compact form factor with the AutoMap VellusX. Walk or drive longer distances to capture accurate survey map data, aided by RTK GPS. A automatic processing pipeline automatically adjusts sensor weights to maintain global accuracy over a wide array of applications. Seamlessly transition between GPS available and GPS denied spaces to create sharp and accurate 3d maps.



SENSOR SPECIFICATIONS

RANGE	300m
FILE TYPE	Las or PLY
IP RATING	IP 65
OPERATION	Real-time
WEIGHT	3.7kg
CAMERAS	4k Colour Cameras
FIELD OF VIEW	360 Degrees
LIDAR	Rotating Hesai xt32m
LOCAL RESOLUTION	10mm
POINTS/SECOND	1 800 000**
POWER	12-36 Vdc
GPS	800 Channel RKT Receiver

TERMINAL SPECIFICATIONS

SIZE	11.6" FullHD 1080p
INTERFACE	Touch Screen
WIFI	802.11 abgn
SSD	2Tb
RAM	32Gb
GRAPHICS	512-Core Volta GPU
CPU	8-core ARM 64-bit
POWER	12-42Vdc



@Automap | Sales@Automap.io | 0438 753 678

