

*Terrus***M**

ULTRA LOW DRIFT | COLOURISED | MOBILE | ACCURATE

**THE BEST IN-CLASS
SLAM SYSTEM**



TerrusM

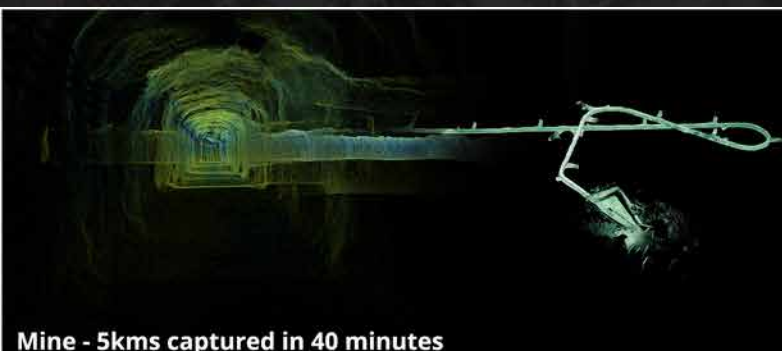
FAST AND ACCURATE UNDERGROUND MAPPING

Introducing the worlds most accurate mobile SLAM System the **TerrusM** by AutoMap. **TerrusM** is designed to suit the challenging demands of subterranean mapping in Australia's mining industry. Built with CSIRO's prize winning WildcatSLAM odometryengine, the **TerrusM** has been vigorously tested with Tier1 mining customers. Ruggedly designed to suit all situations, the **TerrusM** includes a tightly coupled, 360 degree 4k colour camera arrangement that makes it the ideal solution for a wide variety of scanning applications.

POWERED BY WILDCAT SLAM

1st prize for most accurate maps in
the DARPA Sub-T challenge 2021

Winner of the
Hilti SLAM challenge 2022



Mine - 5kms captured in 40 minutes



Designed for versatility

SENSOR SPECIFICATIONS

RANGE	100m
FILE TYPE	Las or PLY
IP RATING	Ip 65
OPERATION	Real-time
WEIGHT	2.4kg
CAMERAS	4k Colour Cameras
FIELD OF VIEW	360 Degrees
LIDAR	Rotating vlp-16
LOCAL RESOLUTION	10-20mm
POINTS/SECOND	300 000**
POWER	12-36 Vdc
GPS	RTK and Atlas services

TERMINAL SPECIFICATIONS

SIZE	11.6" FullHD 1080p
INTERFACE	Touch Screen
WIFI	802.11 abgn
SSD	2Tb
RAM	32Gb
GRAPHICS	512-Core Volta GPU
CPU	8-core ARM 64-bit
POWER	12-42Vdc



Accessories available for capturing any space



@Automap | Sales@Automap.io | 0438 753 678

