

ROBOTICS

AND ACCESSORIES



Terrus**S**
BEST IN-CLASS
SLAM SYSTEM

ROBOTICS

CAPTURE STUNNING MAPS NO MATTER THE ENVIRONMENT!

Powered by the award winning WildcatSLAM, AutoMap has pushed the limits of SLAM based technology with their best in-class systems the *TerrusS* & *TerrusM*. Designed for versatility, these user friendly systems are able to create stunning coloured point clouds like no other. Available with a range of accessories to assist surveyors, no matter the environment, these systems represent the latest in odometry and map-based localisation technology.

For the next generation of localisation and mapping, look no further than the *TerrusS* & *TerrusM*.

POWERED BY THE AWARD WINNING WILDCAT SLAM

1st prize for most accurate maps in
the DARPA Sub-T challenge 2021

Winner of the
Hilti SLAM challenge 2022



VERSATILE ACCESSORIES FOR EVERY APPLICATION

- Backpack -

Large scale survey applications, Road and Urban Environments

- Vest -

For capturing tight hard to reach areas and interiors.

- Sky Hook -

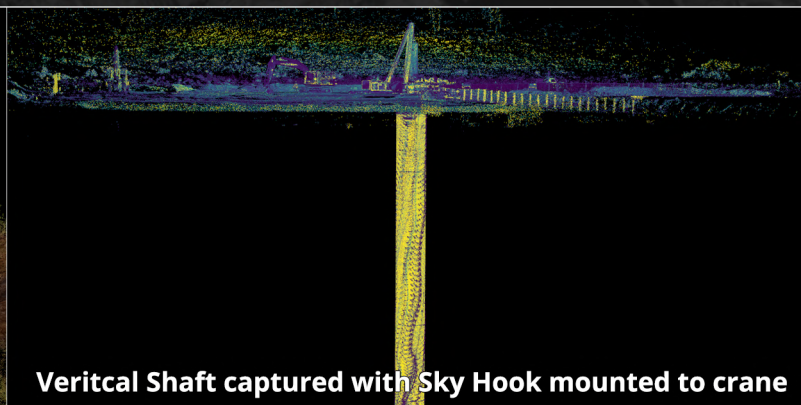
For scanning caverns, voids and vertical shafts.

- Spot Adaptor Kit -

Ideal for repeated scans, high risk areas and custom mapping routes



Automated map captured using Spot Kit



Vertical Shaft captured with Sky Hook mounted to crane



@Automap | Sales@Automap.io | 0438 753 678

